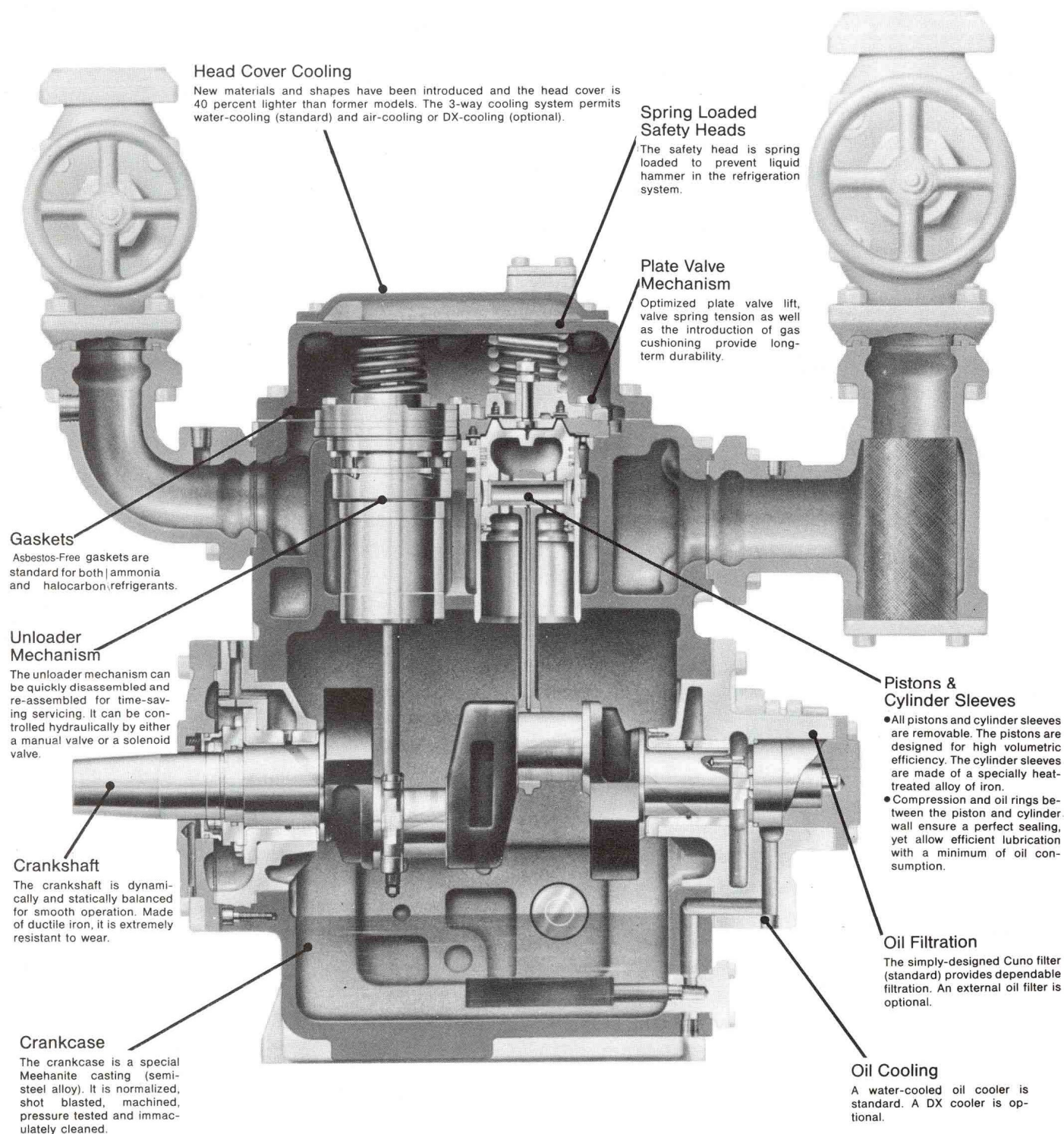
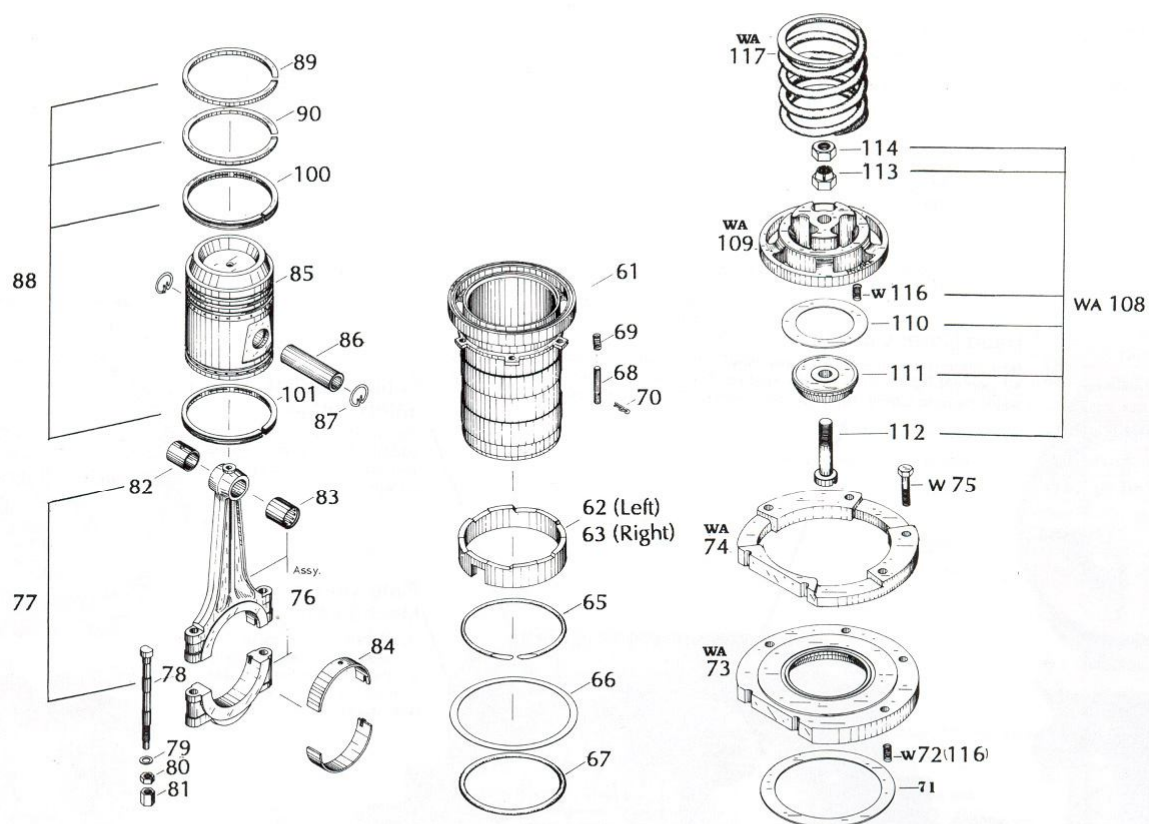


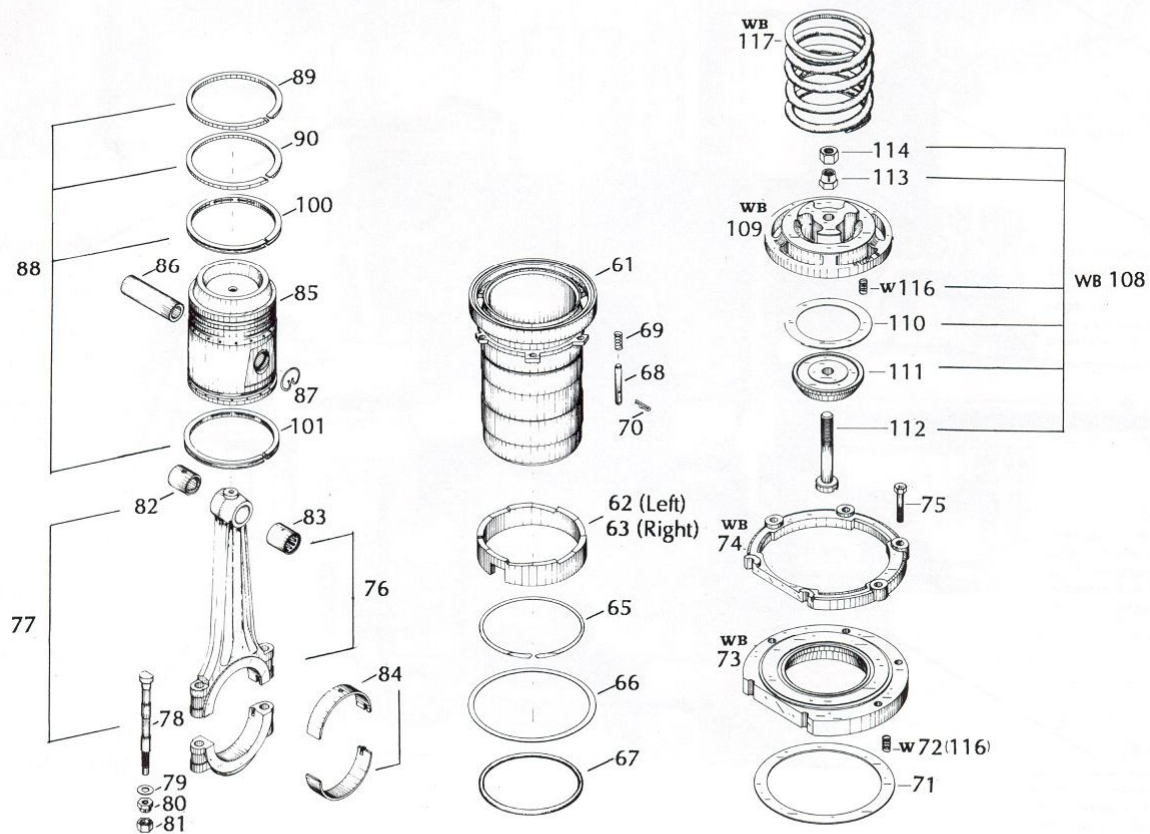
Sectional View of W Series Compressor



WA · WB Cylinder Assembly, Exploded View



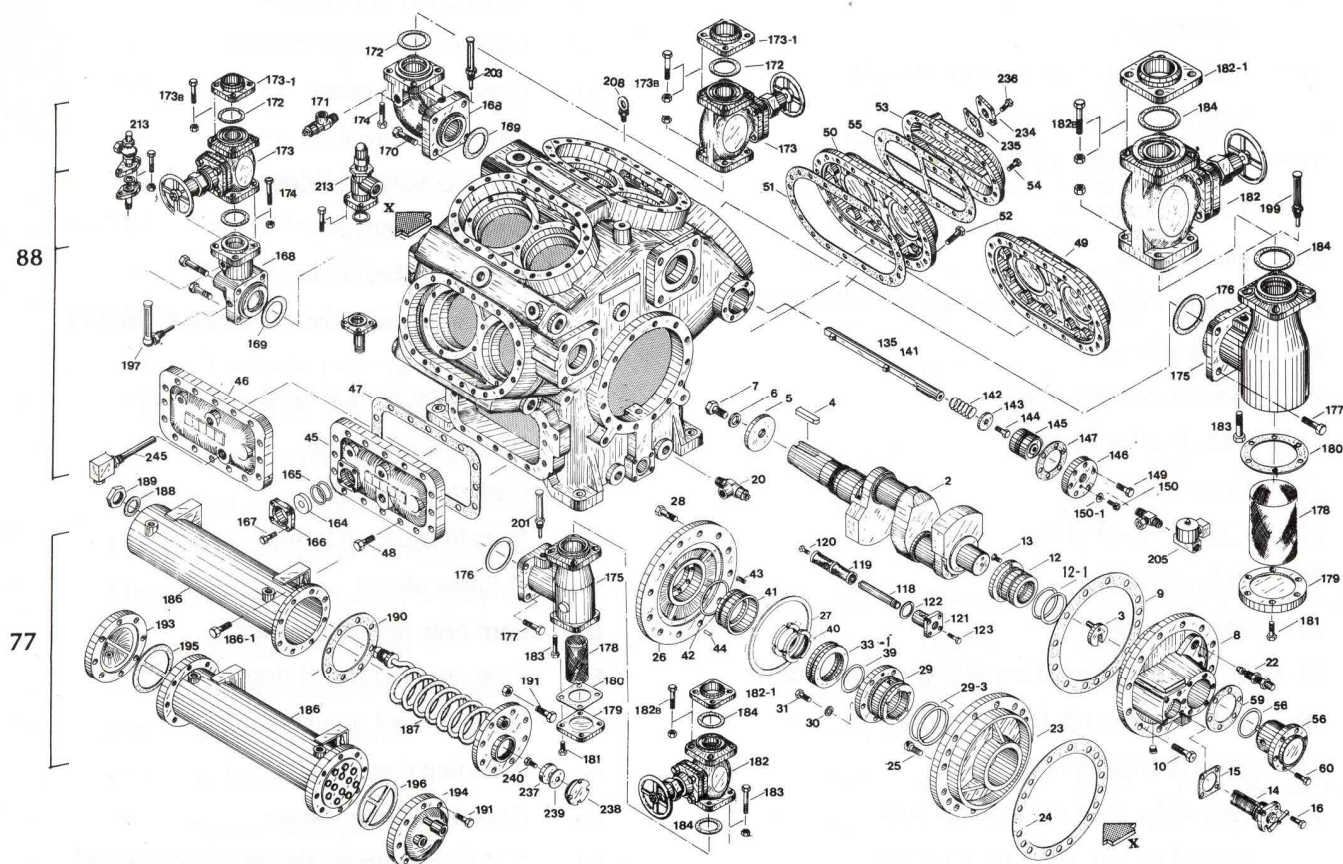
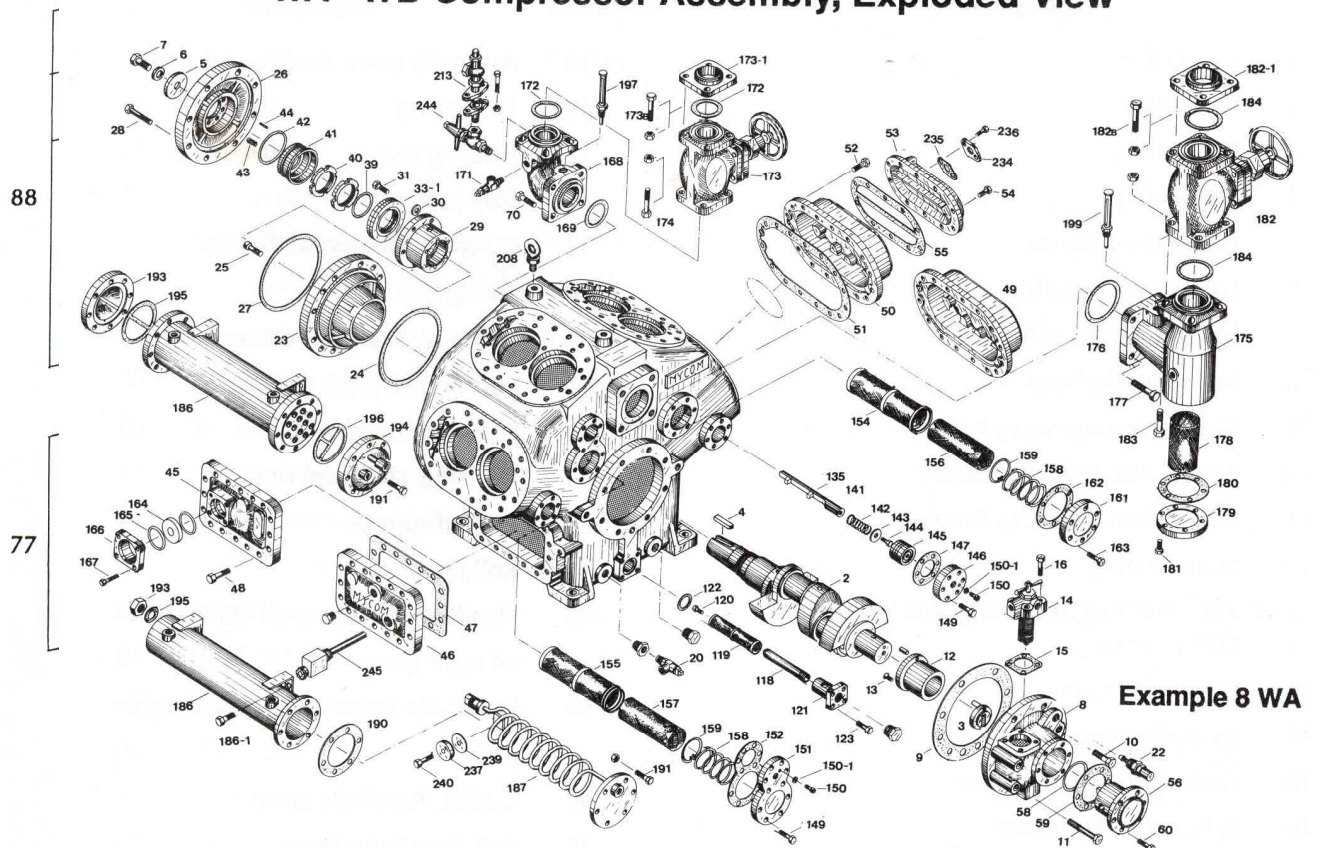
WA series



WB series

Exploded View of Compressor

WA · WB Compressor Assembly, Exploded View



Example 62 WB

MYCOM RECIPROCATING COMPRESSOR PARTS LIST

Index No.	Description	Index No.	Description
1.	Crankcase	34/38*	Assembly parts, double seal collar
2.	Crankshaft	34*	Fixing ring
3.	Drag crank	35*	Floating seat
4.	Key, pulley	36*	Stop pin
5.	Flat washer, pulley	37*	"O" ring, Double seal collar
6.	Lock washer, pulley	38*	Spring
7.	Set bolt, pulley hub	39.	"O" ring, shaft seal collar
8.	Main bearing head	40.	Locknuts (2 p'cs)
9.	Gasket, main bearing head	41	Shaft seal ring
10.	Screw, hex. head cap (short)	42	"O" ring, shaft seal ring
11.	Screw, hex. head cap (long)	43	Helical springs
12.	Main bearing	44	Roll pin
12-1(225)	"O" ring, main brg (WB Compound Comp. Only)	45	Handhole cover, with fittings and oil sight glass
13.	Pin, main bearing	46	Handhole cover, without oil sight glass
14.	Assembly, cuno-filter	47	Gasket, handhole cover
15.	Gasket, cuno-filter cover	48	Bolt, handhole cover
16.	Bolt, cuno-filter cover	49	Head cover (air cooled)
17*	Cuno-filter case for Models 12WB & 12-4WB only	50	Head cover (water cooled)
18*	Gasket, cuno-filter case for Models 12WB & 12-4WB only	51	Gasket, head cover
19*	Bolt, cuno-filter for Models 12WB & 12-4WB only	52	Bolt, head cover
20.	Drain valve	53	Jacket cover, head cover
22.	Regulating valve, oil pressure/oil relief valve	54	Bolt, Jacket cover
23.	Bearing head	55	Gasket, jacket cover
24	Gasket, bearing head	56	Oil pump assembly, consisting of 56,57 & 60.
25	Bolt, bearing head	57	(discontinued numbers)
26.	Cover plate	58	"O" ring, oil pump
27.	Gasket, cover plate	59	Gasket, oil pump
28.	Bolt, cover plate	60	Bolts (6p'cs), oil pump
29.	Thrust bearing	61	Cylinder sleeve
29-3(226)	"O" ring, thrust brg (WB Compound only)	62	Cam ring, leftward sloped
30.	Washers (6 p'cs), thrust bearing	63	Cam ring, rightward sloped
31.	Bolts (6 p'cs), thrust bearing	64	(discontinued numbers)
32*	Assembly, shaft mechanical seal (including No.33-1,39,41 & 42)	65	Retaining ring
33-1	Double shaft seal collar	66	Gast, cylinder sleeve
		67	"O" ring, cylinder sleeve for compound compressor high-stage side only

68	Lift pin	125/134	Intermediate bearing, for Models 12WB & 12-4WB only
69	Spring, lift pin	135/141	Push rod, unloader device
70	Split pin, lift pin	142.	Spring, unloader device
71	Suction plate valve	143.	Washer, push rod
72	Spring, suction plate valve	144.	Screw, push rod
73	Valve plate	145.	Unloader piston
74	Cage guide, discharge valve	146.	Cover, unloader piston
75	Bolt, discharge valve cage guide	147.	Gasket, unloader piston cover
76	Assembly, connecting rod (high stage)	149.	Bolt, unloader piston cover
77	Assembly, connecting rod (standard)	150.	Allen screw, unloader piston cover
78	Bolt, connecting rod	150-1	Washer allen screw
79	Washer, connecting rod	151.	Unloader & suction end cover 8WA
80	Nut, connecting rod (No.1)	152.	Gasket, 8WA
81	Nut, connecting rod (No.2)	153.	(discontinued numbers)
82	Bushing, connecting rod (standard)	154.	Suction strainer (filter)
83	Bushing, connecting rod (needle bearing)	155.	Suction strainer (filter)
84	Bearing halves	156.	Fine screen, suction strainer
85	Piston	157.	Fine screen, suction strainer
86	Piston pin	158.	Spring, suction strainer
87	Lock spring, piston pin	159.	Lock spring, suction strainer
88	Piston ring set	160.	Lock spring, suction strainer (see fig 57)
89	Piston ring, FC-PC-BF	161.	Suction end cover
90	Piston ring, FC-UC	162.	Gasket, suction end cover
91/99	(discontinued numbers)	163.	Bolt, suction end cover
100.	Oil ring, FC-PC-BC3P	164.	Oil sight glass
101.	Oil ring, FC-PC-BC3	165.	"O" ring, oil sight glass
100/107	(discontinued numbers)	166.	Gland, oil sight glass
108.	Assembly, discharge plate valve	167.	Bolt, oil sight glass gland
109.	Discharge valve cage	168.	Elbow, discharge
110.	Discharge plate valve	169.	Gasket, discharge elbow
111.	Valve seat, discharge	170.	Bolt, discharge elbow
112.	Bolt, discharge valve seat	171.	Purge valve
113.	Nut, discharge valve seat (No.1)	172.	Gasket, discharge shut-off valve inlow
114.	Nut, discharge valve seat (No.2)	173.	Discharge shut-off valve
116	Spring, discharge plate valve	174.	Bolt & nut, discharge stop valve
117	Spring, safety head	175.	Scale trap
118	Screen supporter, oil strainer	176.	Gasket, scale trap faucet crankcase side
119	Screen, oil strainer	177.	Bolt, scale trap
120	Bolt, oil strainer	178.	Screen, scale trap
121	Cover, oil strainer		
122.	Gasket, oil strainer cover		
123	Bolt, oil strainer cover		

- 179. Cover, scale trap
- 180. Gasket, scale trap cover
- 181. Bolt, scale trap cover
- 182. Suction shut-off valve
- 183. Bolt & nut, suction shut-off valve
- 184. Gasket, suction shut-off valve
- 185* Assembly oil cooler (water cooled)
- 186 Shell, oil cooler
- 186-1 Bolt, shell fitting
- 185. Coil assy, Watercooled oil cooler
- 186. Gasket, Coil assy
- 187. Nut, Coil assy
- 188. Gasket, oil cover shel and flange
- 189. Bolt, oil cover shel and flange
- 190. Assembly, oil cooler (refrigerant cooled)
- 191. End cover B
- 192. End cover A
- 193. Gasket, endcover A
- 194. Gasket, endcover B
- 195. Assembly, thermometer (high-stage side)
- 199* Assembly, thermometer (low-stage side)
- 201* Assembly, thermometer, high-stage suction side
- 203* Thermometer assembly, low-stage discharge side
- 205* Solenoid valve
- 206* Fitting, oil piping (12WB & 12-4WB)
- 207* Manual valve, unloader
- 208 Hanger eye bolt
- 210* Oil pressure gauge, 75 mm dia
- 211* Oil pressure gauge, 100 mm dia
- 212* Nipple, oil gauge
- 213* Safety valve (external mounting)
- 214* Safety valve (internal mounting)
- 225(12-1) "O" ring, main bearing (Compound only)
- 226(29-3) "O" ring, thrust bearing (Compound only)
- 227* Oil tank
- 234. Oval flange, water cooled head cover jacket piping

- 235. Oval flange gasket, water cooled head cover jacket piping
- 237. Zinc plate, Water cooled oil cooler
- 238. Plug, Zinc plate
- 239. Gasket, Zinc plate
- 240. Bolt, Zinc plate
- 236. Bolt, water cooled head cover jacket piping
- 245. Electric oil heater

Remarks :

1. State serial number of compressor for which replacement parts are being ordered
2. If serial number is not available, it is necessary to indicate compressor model number, type of refrigerant used, and invoice number for compressor
3. Nos.76/77 connecting rod and Nos.185/192 oil cooler are supplied as assemblies.
4. Parts numbers marked * in index column are not shown in exploded drawing. These parts are for special application depending on type of refrigerant used or other non-standard conditions.

"W" Series

Care must be exercised when ordering spare parts. Spare parts for reciprocating compressors are classified by type, i.e., those for the WA, WJ and WB models as well as the coventional A, J and B models. Some compressor parts have no interchangeability whatsoever while others may be fitted with common parts. When ordering spare parts for "W" Series compressors, note that the following parts are exclusive to the series.

Index No.	Name
49,50,53	Head and jacket covers
52	Screw, head cover
72	Spring, suction valve
73	Valve plate
74	Discharge valve cage guide
75	Screw, discharge valve cage guide
108	Discharge valve assembly
109	Discharge valve cage
116	Spring, discharge plate valve
117	Spring, safety head.